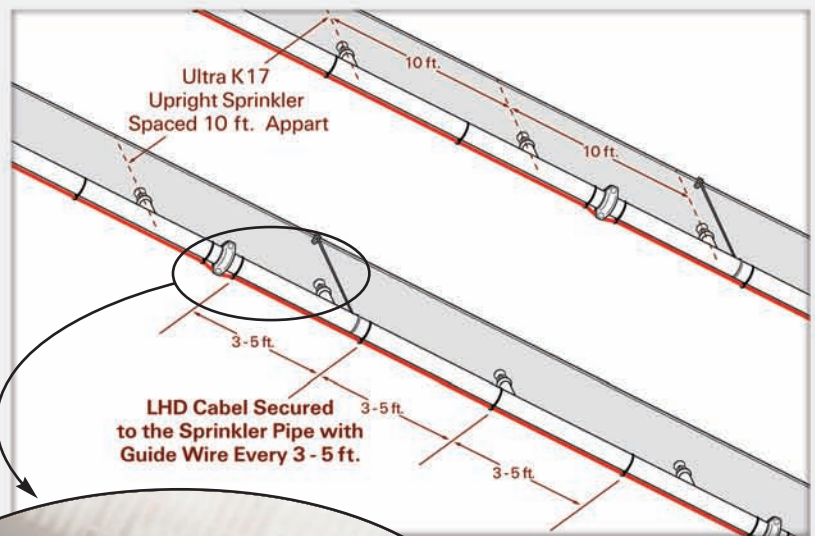
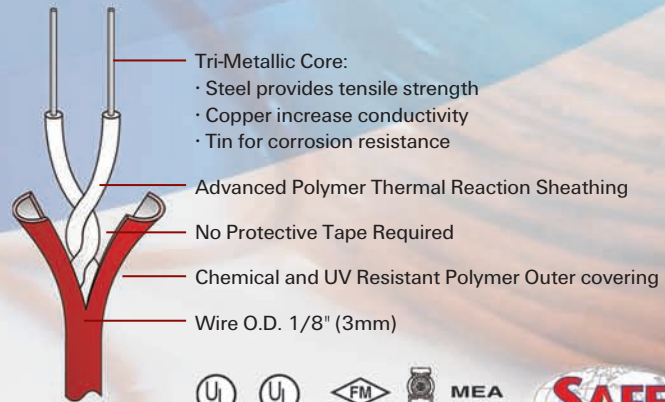


LHD LINEAR HEAT DETECTION CABLE

Safe ThermoCable™ LHD Cable

FEATURES & BENEFITS

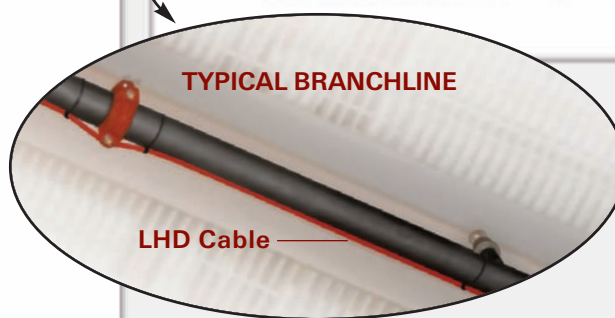
- ◆ **Ideal for Double Interlock Preaction Detection**
- ◆ **Install up to 10,000 Linear Feet per Zone**
- ◆ **Compatible with Any Conventional Releasing Panel Listed for Fire**
- ◆ **Can Detect Heat Anywhere Along the Entire Length of Cable**
- ◆ **Multiple Alarm Temperatures can be Incorporated in the Same Zone**
- ◆ **Easy to Add a Module**
- ◆ **Lower Material & Installation Cost**



GENERAL DESCRIPTION

The Linear Heat Detection (LHD) cable, is a combination of advanced polymer and digital technologies which can be used on any panel, and can detect heat anywhere along its entire length.

At the core of the LHD cable is a twisted pair of extremely low resistance, tri-metallic conductors, sheathed in new advanced thermal polymers. These polymers are chemically engineered to break down at specific fixed temperatures allowing the twisted conductors to make contact and initiate an alarm. The polymer used for the protective outer coating of LHD cable is chemical resistant and UV protected. This allows the LHD cable be used in a wide variety of installations and special hazard applications.



TECHNICAL DATA

Temperatures Rating: 155° F (68° C) (*typical temperature*)
 172° F (78° C)
 190° F (88° C)
 220° F (105° C)

Available Jacket Material: Polypropylene, PVC, Nylon

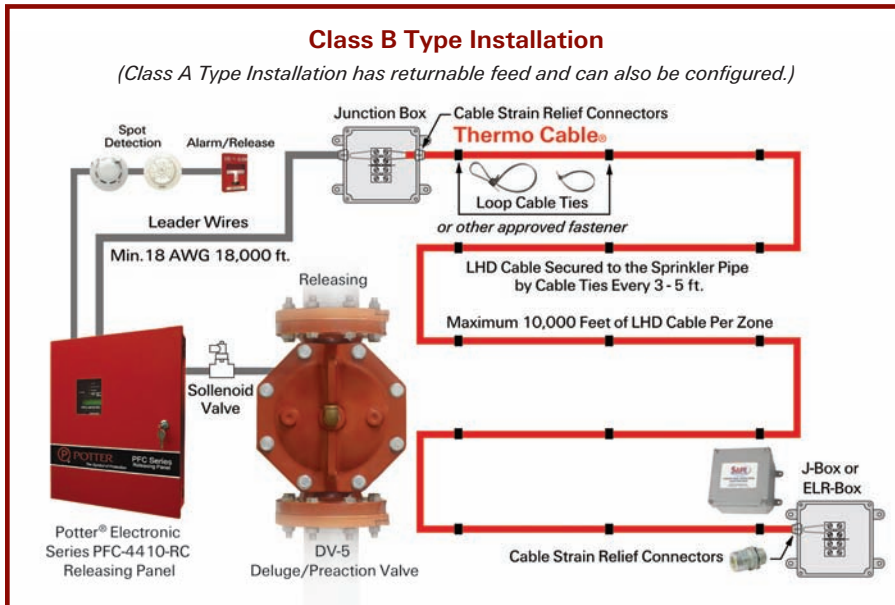
RF Tested: Up to 10,000 linear ft.

Guide Wire: For long spans using support every 3 to 5ft.

Resistance: .05 ohms/ft resistance per twisted pair

Contact a TFBP distributor for a complete description of all Listing criteria, design parameters, installation instructions, care and maintenance guidelines, and our limited warranty.

An essential part of a Quell™ designed fire sprinkler system



Linear Heat Detection Cable allows a Quell designed fire sprinkler system to be more efficient by quickly recognizing the fire, and conveying the information back to the fire alarm panel.

LHD CABLE INSTALLATION ACCESSORIES

Double Loop Cable Tie

Fits 3/4" to 2" sprinkler pipe

Fits 2-1/2" to 3-1/2" sprinkler pipe



Single Loop Cable Tie

Fits 4" to 6" sprinkler pipe



Junction / ELR-Box

NEMA 4X moisture proof standard junction box, with crew terminal strip, also used for all outdoor splices.

Dimensions: 4" x 4" x 2"



Cable Strain Relief Connector

One required for each Junction/ELR-Box, HD-Junction/ELR-Box and HD-ELR-Box. Two required for all outdoor splices.



Splicing Block

Two point with screw terminals.



Low Temperature Splicing Tape

Black



Splicing Tape

White, Red, Blue

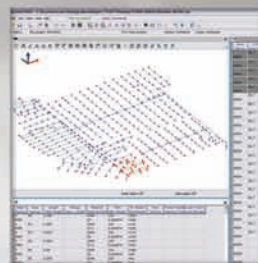


Sealant Tape

For weatherproof splices.



TYCO ELEMENTS OF A QUELL DESIGNED FIRE SPRINKLER SYSTEM



SprinkFDT-Q™ Software



Ultra K17 286° Sprinkler
16.8 K-factor



QRS Electronic Accelerator



DV-5 Deluge/Preaction Valve

A Quell designed sprinkler system provides A Greater Degree of Fire Protection.

Patent-pending Quell designed fire sprinkler systems are the first of their kind for cold storage, outdoor and unheated warehouse facilities.

Tyco Fire & Building Products

Technical Services

Phone: 800-381-9312

Fax: 800-791-5500

www.Tyco-Fire.com

tyco / Fire & Building Products

Contact a TFBP distributor for a complete description of all Listing criteria, design parameters, installation instructions, care and maintenance guidelines, and our limited warranty.