

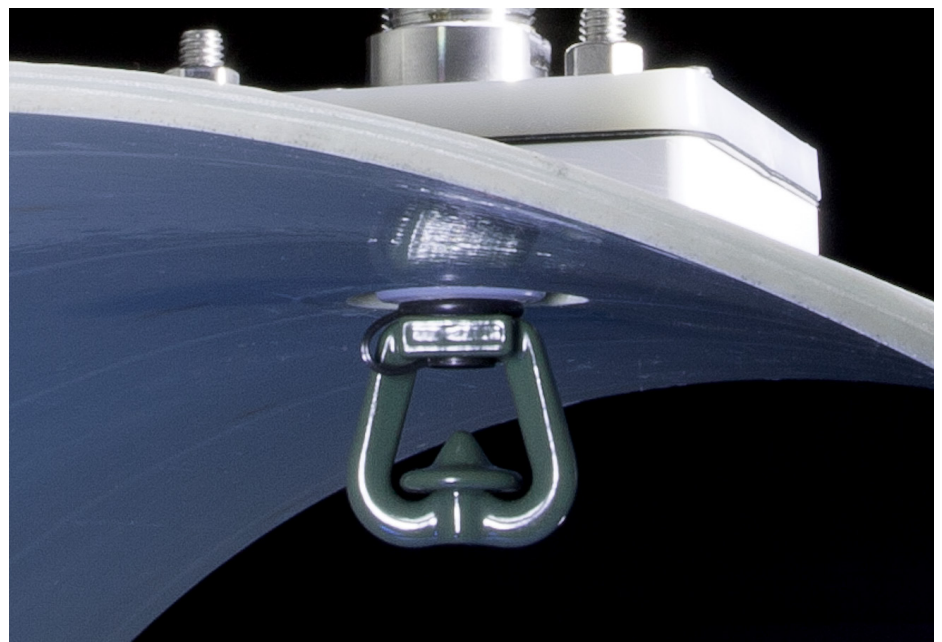


DDS Duct Deluge System

Key Benefits:

- // **Protects Ventilation Ductwork Handling Corrosive Gases**
- // **Corrosion Resistant Components feature Halar® Coating**
- // **Fast Installation Reduces Shutdown Time**
- // **Simple Preventative Maintenance and Easy Visual Inspection**
- // **System Approach Includes TYCO Nozzles, Protectowire® Linear Heat Detection, FlexHead® Duct Mounting Hardware, TYCO Valve Cabinet**
- // **FM Global Tested and Approved Components**

The TYCO DDS Duct Deluge System is a new water-based fire protection solution for ventilation ductwork handling extremely corrosive environments. Specially designed components resist damage from corrosive gases in the exhaust systems of highly acidic process environments, such as those found in Steel Manufacturing, Coal Power Generation, Chemical Industry, Pulp & Paper Plants, as well as Metallurgical Gas Cleaning and Acid Plants. The DDS Duct Deluge System offering is tested and Approved by Factory Mutual and includes corrosion resistant water spray nozzles, linear heat detection cable and accessories, duct mounting hardware as well as a pre-assembled, electric actuation deluge valve cabinet.





TYCO Type DN-5 Duct Nozzle

The TYCO Type DN-5 Corrosion Resistant Duct Nozzles are open (non-automatic) directional spray nozzles designed for use in water spray fixed systems for fire protection applications in extremely corrosive environments. They are external deflector type nozzles that discharge a uniform spray of medium velocity water droplets and meet the discharge requirements of FM Global.

Type DN-5 Duct Nozzles are effective in coating exposed vertical, horizontal, curved, and irregular shaped surfaces of duct interiors in a cooling water spray to suppress and potentially extinguish fire, preventing structural damage and spread of fire within ductwork and to adjacent equipment.

Type DN-5 Duct Nozzles are constructed of stainless steel and coated with Halar[®] and designed with a Blow-Off Plug, which protects system piping from ingress of corrosive gases as well as the accumulation of debris within the nozzle waterway.



PROTECTOWIRE[®] Linear Heat Detection

Protectowire Linear Heat Detector provides continuous heat detection along the entire length of cable, with point sensitivity anywhere along its length. The outer covering is ideally suited to withstand the severe environmental conditions present in industrial high risk hazards, yet sensitive enough to identify and display the alarm location. Available in different temperature models, it is easy to install and maintain with simple hand tools.



TYCO RED-E Cabinet With Model DV-5 Deluge Valve

The TYCO Model DV-5 Red-E Cabinet is a pre-assembled fire protection valve package enclosed within a free-standing cabinet designed to occupy minimal floor space and to provide an aesthetically pleasing enclosure for a fire protection valve riser.

The entire package is pre-wired, with grooved connections on the water inlet and outlet to the valve riser to provide minimal installation time. The valve package includes the system (manual) shut-off control valve, automatic water control valve, and supervisory switches. The electric actuation deluge trim configuration is used with the DDS Dust Deluge system.



FLEXHEAD[®] Duct Mounting Hardware

The FlexHead duct mounting system installs in minutes and minimizes shutdown, saving time and money during periods of preventative maintenance. FlexHead sprinkler connection allows for movement due to duct vibration or seismic activity. The braided stainless steel flexible hose, Halar[®] upper mounting block, and lower mounting block (available in several materials to match duct material) are supplied and are used to install the nozzle and linear heat detection. Once installed, nozzles and linear heat detection installation points are easily accessible, minimizing the time required for recommended regular inspections.

Refer to the **Technical Data Sheet TFP870** for complete description of all listing criteria, design parameters, installation instructions, and care and maintenance guidelines.