

# tyco

## Fire Products

### Features and Benefits

- **Aesthetically Pleasing Appearance**
- **Professionally Assembled**
- **Minimal Installation Time**
- **Internally Pre-Wired**
- **UL/ULC/FM Components**
- **Custom Manufactured**
- **Sizes 1½", 2", 3", 4" & 6" Preaction, Double Interlock, and Deluge Packages**
- **Model DV-5 Deluge Valve (Standard)**
- **All Gauges and Panel Display are Visible Externally**

### General Description

The Red-E Cabinet is a pre-assembled fire protection valve package enclosed within a free-standing cabinet designed to occupy minimal floor space and to provide an aesthetically pleasing enclosure for a fire protection valve riser. The entire package is pre-wired and the water inlet and outlets to the valve riser are grooved to provide minimal installation time. The valve package includes the system (manual) shut-off control valve, automatic water control valve, as well as waterflow and supervisory switches. Where system air pressure is required for either supervision or automatic water control valve actuation. An air compressor and associated controls are also provided.

Integral to the Red-E Cabinet door is a control panel and back-up batteries for providing electrical alarm, supervisory, and trouble functions. All switches within the cabinet are pre-wired to the control panel, making the electrical connections for power, detection circuits, and alarms

*(continued on back)*

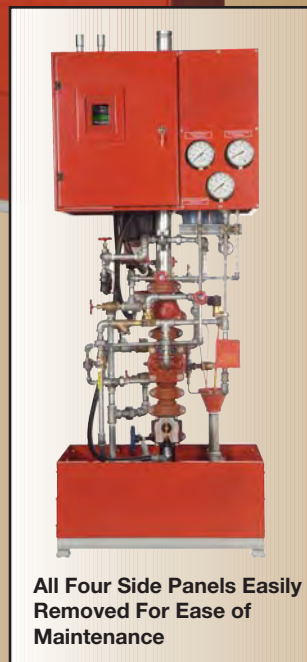
# RED-E CABINET®

## RED-E CABINET

### Integrated Fire Protection Packages



- **Supply Pipe to Cabinet From Either Side**
- **System Discharges Vertically Through Top of Cabinet**
- **Furniture Grade Rollers (4) are Standard at Bottom of Cabinet**
- **Model DV-5 Deluge / Preaction Valve (Standard)**
- **Potter 4410 Releasing Control Module (Standard)**
- **Model BFV-1 Butterfly Control Valve (Standard)**



**All Four Side Panels Easily Removed For Ease of Maintenance**

### Technical Data

The Red-E Cabinet is constructed of 14 gauge steel, and is free-standing. The standard paint finish is bright red. The front door of the enclosure is fully hinged to maximize access to the enclosure. Internal controls that provide functions to reset a system after operation (e.g., alarm control valve, alarm test valve, main drain valve, etc.) are individually tagged for easy identification. All prefabricated piping is Schedule 40 black steel, and the valve trim is galvanized Schedule 40 steel pipe. All electrical junction boxes meet the requirements of NEMA® 12.

### Component Approvals

UL, C-UL Listed, and/or FM Approved

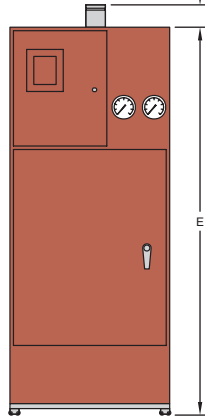
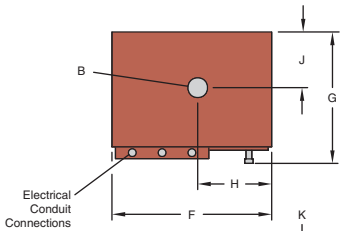
*(Always refer to Technical Data Sheet for complete description of all Listing criteria, design parameters, installation instructions, care and maintenance guidelines, and our Limited Warranty.)*

# RED-E CABINET®

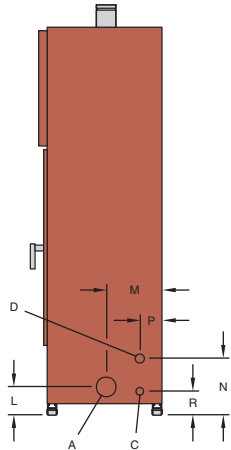
Port	Connection Description	Nominal Riser Size				
		Small Cabinet		Large Cabinet		
		1½ Inch (DN40)	2 Inch (DN50)	3 Inch (DN80)	4 Inch (DN100)	6 Inch (DN150)
A	Supply Header	1½" (38.1 mm)	2" (50.8 mm)	3" (76.2 mm)	4" (101.6 mm)	6" (152.4 mm)
B	System Discharge	1½" (38.1 mm)	2" (50.8 mm)	3" (76.2 mm)	4" (101.6 mm)	6" (152.4 mm)
C	Drain Header	¾" NPT	¾" NPT	1¼" NPT	2" (50.8 mm)	2" (50.8 mm)
D	Drip Funnel Drain	1¼" NPT	1¼" NPT	1¼" NPT	1¼" NPT	1¼" NPT

Notes: 1. Connections are Grooved except where noted by NPT thread designations.  
2. All connections except System Discharge are made internal to cabinet.

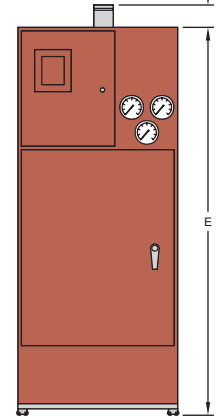
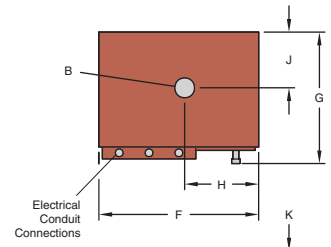
Cabinet Size	Nominal Dimensions in inches and (millimeters)										
	E	F	F	H	J	K	L	M	N	P	R
Small	69¼ (1759.0)	28½ (723.9)	22¾ (577.9)	13¼ (336.6)	10 (254.0)	4 (101.6)	5 (127.0)	10 (254.0)	10½ (267.2)	4 (101.6)	4¼ (108.0)
Large	75½ (1927.2)	36 (914.4)	31 (787.4)	18 (457.2)	14½ (368.3)	2 (50.8)	7 (177.8)	14½ (368.3)	11¾ (298.2)	6½ (165.1)	5½ (139.7)



Deluge System Package



Praction System Package



## DV-5 Red-E Cabinet Matrix

P/N 5 2 - 8 X X - X - X - X - X

Valve	DV-5 Style	Size	Actuation Device	Air Maintenance Device*	Trim Type	US / Canada	Compressor
52	8	1½" = 1	Deluge / Wet = 1	None = 0	Galvanized = 1	USA = A	None = 0
52	8	2" = 2	Deluge / Dry = 2	AMD-1 = 1	Black = 2	Canada = C	1/6 hp 110 Gal = 1
52	8	3" = 3	Deluge / Elec = 3	AMD-2 = 2	Brass = 3	-	1/3 hp 215 Gal = 2
52	8	4" = 4	S/I Wet = 4	AMD-3 = 3	-	-	1/2 hp 335 Gal = 3
52	8	6" = 6	S/I Dry = 5	-	-	-	3/4 hp 435 Gal = 4
52	8	-	S/I Elec = 6	-	-	-	1 hp 610 Gal = 5
52	8	-	D/I Elec / Pneu = 7	-	-	-	1 hp 900 Gal = 6
52	8	-	D/I Elec / Elec = 8	-	-	-	1 hp 1200 Gal = 7
52	8	-	-	-	-	-	S/I Compressor = 8

S/I = Single Interlock • D/I = Double Interlock  
\*Not all D/I require an Air Maintenance Device

(continued from front)

the only remaining electrical connections to complete the system.

In addition to the integral control panel, windows have been provided in the Red-E Cabinet door for viewing the releasing panel functions and essential system pressure gauges. A lock for the control panel access door is standard, and a

lock for the cabinet door is optional.

The Red-E Cabinet has been designed to readily incorporate 1-1/2", 2", 3", 4" & 6" valve risers for the following types of systems:

- Deluge System – Electric Actuation
- Single Interlock Praction System
- Double Interlock Praction System

**tyco**

Fire Products

**Tyco Fire Products**

Technical Services

Ph: 800-791-9312

Fax: 800-791-5500

[www.Tyco-Fire.com](http://www.Tyco-Fire.com)

NEMA is a trademark of the National Electrical Manufacturers Association. RED-E CABINET and Tyco are either registered trademarks or trademarks of Tyco and/or its affiliates in the United States and/or other countries. All other brand names, product names, or trademarks belong to their respective owners. Tyco Fire Products reserves the right to change product design and specifications without notice.