

Pipe Fittings NPT Threaded, Ductile Iron

General Description

The TYCO Series 800 Threaded Pipe Fittings and California Tees & Elbows are manufactured from ductile iron. They are stronger and more corrosion resistant than cast iron fittings. The additional strength is provided by the ductile properties and by adding magnesium while the iron is being poured into the final cast shape. Although lighter than standard cast iron, the fittings have an added advantage of being less susceptible to cracking due to their added strength.

The Series 800, California, and Figure 719 Threaded Pipe Fittings are a re-designation for the Central Series 800, California, and Figure 719 Threaded Pipe Fittings.

NOTICE

The Threaded Pipe Fittings described herein must be installed and maintained in compliance with this document, as well as with the applicable standards of the National Fire Protection Association, in addition to the standards of any other authorities having jurisdiction. Failure to do so may impair the performance of these devices.

The owner is responsible for maintaining their fire protection system and devices in proper operating condition. Contact the installing contractor or product manufacturer with any questions.

Technical Data

Approvals
UL Listed
FM Approved

Maximum Working Pressure
300 psi (20,7 bar)

Material
Series 800 and California Fittings:
Ductile Iron

Figure 719 Plug:
Cast Iron

Pipe Thread
NPT per ANSI B1.20.1

Installation

Apply TEFLON tape or high quality pipe joint compound on male pipe threads and tighten two to three turns beyond hand tight.

NOTICE

Installers who have not used ductile iron threaded fittings should be instructed that the fittings are stronger than the pipe and overtightening the fitting can create leaks and cause damage to pipe threads. In general, there is about one-half turn difference between cast iron and ductile iron fittings. Apply TEFLON tape or high quality pipe joint compound on the male pipe threads and tighten two to three turns beyond hand tight. If an automatic make-on machine is being used, please exercise caution in setting the machine to the proper parameters prior to tightening fittings onto the male pipe threads.



Limited Warranty

For warranty terms and conditions, visit www.tyco-fire.com.

Ordering Procedure

Contact your local distributor for availability. When placing an order, indicate the full product name and Part Number (P/N).

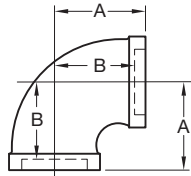


FIGURE 811
90° ELBOW

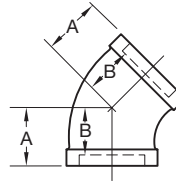


FIGURE 813
45° ELBOW

| Nominal Pipe Size | Figure 811 | | | | Figure 813 | | | |
|--------------------|-------------------|------------------|------------------|--------------------------------|----------------|------------------|------------------|--------------------------------|
| | ANSI Inches DN | A Inches (mm) | B Inches (mm) | Approx. Weight Lbs. (kg) | Part Number | A Inches (mm) | B Inches (mm) | Approx. Weight Lbs. (kg) |
| 1/2 15 | 1.13 (28,7) | 0.56 (14,2) | 0.24 (0,11) | 86206 | 0.88 (22,4) | 0.38 (9,7) | 0.22 (0,09) | 86780 |
| 3/4 20 | 1.31 (33,3) | 0.75 (19,0) | 0.40 (0,18) | 86205 | 1.00 (25,4) | 0.44 (11,2) | 0.33 (0,15) | 86781 |
| 1 25 | 1.50 (38,1) | 0.81 (20,6) | 0.64 (0,29) | 86200 | 1.13 (28,7) | 0.81 (20,6) | 0.48 (0,21) | 86280 |
| 1-1/4 32 | 1.75 (44,5) | 1.06 (26,9) | 0.95 (0,43) | 86201 | 1.31 (33,3) | 0.63 (16,0) | 0.73 (0,33) | 86281 |
| 1-1/2 40 | 1.94 (49,3) | 1.19 (30,2) | 1.24 (0,56) | 86202 | 1.44 (36,6) | 0.69 (17,5) | 0.93 (0,42) | 86282 |
| 2 50 | 2.25 (57,1) | 1.50 (38,1) | 1.74 (0,79) | 86203 | 1.68 (42,7) | 0.94 (23,9) | 1.55 (0,70) | 86283 |
| 2-1/2 65 | 2.69 (68,3) | 1.56 (39,6) | 3.28 (1,49) | 86204 | 1.94 (49,3) | 1.00 (25,4) | 2.70 (1,22) | 86782 |

TABLE A
FIGURES 811 & 813
NOMINAL DIMENSIONS

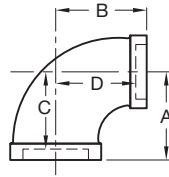


FIGURE 812
90° REDUCING ELBOW

| Nominal Pipe Size | Figure 812 | | | | | |
|---------------------------------|-------------------|---------------------|---------------------|---------------------|---------------------|-----------------------------------|
| | ANSI Inches DN | A Inches (mm) | B Inches (mm) | C Inches (mm) | D Inches (mm) | Approx. Weight Lbs. (kg) |
| 3/4 x 1/2 20 x 15 | 1.19 (30,2) | 1.19 (30,2) | 0.63 (16,0) | 0.63 (16,0) | 0.33 (0,15) | 86342 |
| 1 x 1/2 25 x 15 | 1.25 (31,8) | 1.38 (35,1) | 0.56 (14,2) | 0.81 (20,6) | 0.44 (0,20) | 86210 |
| 1 x 3/4 25 x 20 | 1.38 (35,1) | 1.44 (36,6) | 0.69 (17,5) | 0.88 (22,4) | 0.53 (0,24) | 86211 |
| 1-1/4 x 1/2 32 x 15 | 1.31 (33,3) | 1.50 (38,1) | 0.63 (16,0) | 0.94 (23,9) | 0.64 (0,29) | 86212 |
| 1-1/4 x 3/4 32 x 20 | 1.44 (36,6) | 1.63 (41,4) | 0.75 (19,0) | 1.06 (26,9) | 0.75 (0,34) | 86213 |
| 1-1/4 x 1 32 x 25 | 1.56 (39,6) | 1.68 (42,7) | 0.88 (22,4) | 1.00 (25,4) | 0.77 (0,35) | 86214 |
| 1-1/2 x 3/4 40 x 20 | 1.50 (38,1) | 1.75 (44,4) | 0.75 (19,0) | 1.19 (30,2) | 0.95 (0,43) | 86221 |
| 1-1/2 x 1 40 x 25 | 1.63 (41,4) | 1.81 (46,0) | 0.88 (22,4) | 1.13 (28,7) | 0.99 (0,45) | 86215 |
| 1-1/2 x 1-1/4 40 x 32 | 1.81 (46,0) | 1.88 (47,8) | 1.13 (28,7) | 1.19 (30,2) | 1.14 (0,52) | 86216 |
| 2 x 3/4 50 x 20 | 1.63 (41,4) | 1.94 (49,3) | 0.88 (22,4) | 1.38 (35,1) | 1.39 (0,63) | 86217 |
| 2 x 1 50 x 25 | 1.75 (44,4) | 2.06 (52,3) | 2.00 (50,8) | 1.31 (33,3) | 1.58 (0,72) | 86218 |
| 2 x 1-1/2 50 x 40 | 2.00 (50,8) | 2.19 (55,6) | 1.25 (31,8) | 1.44 (36,6) | 1.67 (0,76) | 86220 |
| 2-1/2 x 2 65 x 50 | 2.38 (60,5) | 2.63 (66,8) | 1.25 (31,8) | 1.88 (47,8) | 3.01 (1,36) | 86762 |

TABLE B
FIGURE 812
NOMINAL DIMENSIONS

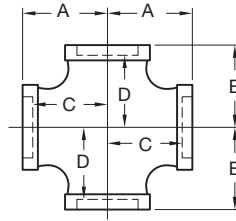
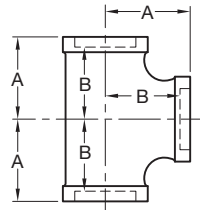


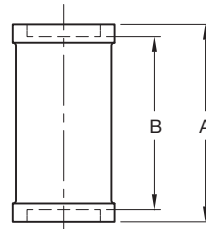
FIGURE 817
CROSS

| Nominal Pipe Size | Figure 817 | | | | | |
|---|-------------------|---------------------|---------------------|---------------------|---------------------|-----------------------------------|
| | ANSI Inches DN | A Inches (mm) | B Inches (mm) | C Inches (mm) | D Inches (mm) | Approx. Weight Lbs. (kg) |
| 1 25 | 1.50 (38,1) | 1.50 (38,1) | 0.81 (20,6) | 0.81 (20,6) | 0.97 (0,44) | 86284 |
| 1-1/4 32 | 1.75 (44,4) | 1.75 (44,4) | 1.06 (26,9) | 1.06 (27,0) | 1.59 (0,72) | 86285 |
| 1-1/2 40 | 1.94 (49,3) | 1.94 (49,3) | 1.19 (30,2) | 1.19 (30,2) | 1.89 (0,86) | 86286 |
| 2 50 | 2.25 (57,1) | 2.25 (57,1) | 1.50 (38,1) | 1.50 (38,1) | 2.93 (1,33) | 86287 |
| 1-1/4 x 1-1/4 x 1 x 1 32 x 32 x 25 x 25 | 1.69 (42,9) | 1.56 (39,6) | 1.00 (25,4) | 0.88 (22,4) | 1.25 (0,56) | 86289 |
| 1-1/2 x 1-1/2 x 1 x 1 40 x 40 x 25 x 25 | 1.81 (46,0) | 1.63 (41,4) | 1.06 (26,9) | 1.94 (49,3) | 1.48 (0,71) | 86322 |
| 2 x 2 x 1 x 1 50 x 50 x 25 x 25 | 2.00 (50,8) | 1.75 (44,4) | 1.25 (31,8) | 1.06 (26,9) | 2.64 (1,20) | 86291 |

TABLE C
FIGURE 817
NOMINAL DIMENSIONS



**FIGURE 814
IRON TEE**



**FIGURE 818
STRAIGHT COUPLING**

| Nominal Pipe Size | Figure 814 | | | | Figure 818 | | | |
|--------------------|----------------|----------------|----------------|--------------------------|----------------|----------------|----------------|--------------------------|
| | ANSI Inches DN | A Inches (mm) | B Inches (mm) | Approx. Weight Lbs. (kg) | Part Number | A Inches (mm) | B Inches (mm) | Approx. Weight Lbs. (kg) |
| 1/2 15 | 1.13 (28,7) | 0.56 (14,2) | 0.33 (0,15) | 86340 | 1.38 (35,1) | 0.31 (7,9) | 0.18 (0,08) | 72779 |
| 3/4 20 | 1.31 (33,3) | 0.75 (19,0) | 0.50 (0,23) | 86341 | 1.63 (41,4) | 0.56 (14,0) | 0.26 (0,11) | 72778 |
| 1 25 | 1.50 (38,1) | 0.81 (20,6) | 0.85 (0,38) | 86230 | 1.75 (44,4) | 0.38 (9,7) | 0.44 (0,20) | 72755 |
| 1-1/4 32 | 1.75 (44,4) | 1.06 (26,9) | 1.30 (0,59) | 86231 | 2.00 (50,8) | 0.56 (14,0) | 0.54 (0,24) | 72754 |
| 1-1/2 40 | 1.94 (49,3) | 1.19 (30,2) | 1.63 (0,74) | 86232 | 2.19 (55,6) | 0.75 (19,0) | 0.71 (0,32) | 72753 |
| 2 50 | 2.25 (57,1) | 1.50 (38,1) | 2.63 (1,19) | 86233 | 2.63 (66,8) | 1.13 (28,7) | 1.15 (0,52) | 72752 |
| 2-1/2 65 | 2.69 (68,3) | 1.56 (39,6) | 4.55 (2,06) | 86234 | 3.00 (76,2) | 0.75 (19,0) | 2.29 (1,04) | 72758 |

**TABLE D
FIGURES 814 & 818
NOMINAL DIMENSIONS**

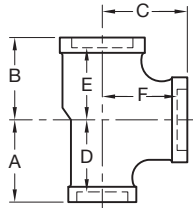


FIGURE 815
REDUCING TEE

| Nominal Pipe Size | Figure 815 | | | | | | | Part Number |
|--|-------------------|---------------------|---------------------|---------------------|---------------------|---------------------|---------------------|-------------|
| | ANSI Inches DN | A Inches (mm) | B Inches (mm) | C Inches (mm) | D Inches (mm) | E Inches (mm) | F Inches (mm) | |
| 3/4 x 3/4 x 1/2 20 x 20 x 15 | 1.19 (30,2) | 1.19 (30,2) | 1.25 (31,8) | 0.63 (16,0) | 0.63 (16,0) | 0.69 (17,5) | 0.46 (0,21) | 86235 |
| 3/4 x 3/4 x 1 20 x 20 x 25 | 1.44 (36,6) | 1.44 (36,6) | 1.38 (35,1) | 0.88 (22,4) | 0.88 (22,4) | 0.69 (17,5) | 0.68 (0,31) | 86755 |
| 1 x 1/2 x 1 25 x 15 x 25 | 1.50 (38,1) | 1.38 (35,1) | 1.50 (38,1) | 0.81 (20,6) | 0.81 (20,6) | 0.81 (20,6) | 0.70 (0,32) | 86236 |
| 1 x 3/4 x 1/2 25 x 20 x 15 | 1.25 (31,8) | 1.19 (30,2) | 1.38 (35,1) | 0.56 (14,2) | 0.63 (16,0) | 0.81 (20,6) | 0.63 (0,28) | 86756 |
| 1 x 3/4 x 3/4 25 x 20 x 20 | 1.38 (35,1) | 1.31 (33,3) | 1.44 (36,6) | 0.69 (17,5) | 0.75 (19,0) | 0.88 (22,4) | 0.68 (0,31) | 86757 |
| 1 x 3/4 x 1 25 x 20 x 25 | 1.50 (38,1) | 1.44 (36,6) | 1.50 (38,1) | 0.81 (20,6) | 0.88 (22,4) | 0.81 (20,6) | 0.77 (0,35) | 86237 |
| 1 x 1 x 1/2 25 x 25 x 15 | 1.25 (31,8) | 1.25 (31,8) | 1.38 (35,1) | 0.56 (14,3) | 0.56 (14,3) | 0.81 (20,6) | 0.66 (0,30) | 86238 |
| 1 x 1 x 3/4 25 x 25 x 20 | 1.38 (35,1) | 1.38 (35,1) | 1.44 (36,6) | 0.69 (17,5) | 0.69 (17,5) | 0.88 (22,4) | 0.73 (0,33) | 86239 |
| 1 x 1 x 1-1/4 25 x 25 x 32 | 1.69 (42,9) | 1.69 (42,9) | 1.56 (39,6) | 1.00 (25,4) | 1.00 (25,4) | 0.88 (22,4) | 0.97 (0,44) | 86240 |
| 1 x 1 x 1-1/2 25 x 25 x 40 | 1.81 (46,0) | 1.81 (46,0) | 1.63 (41,4) | 1.13 (28,6) | 1.13 (28,6) | 0.88 (22,4) | 1.14 (0,52) | 86241 |
| 1-1/4 x 1 x 1/2 32 x 25 x 15 | 1.94 (49,2) | 1.25 (31,8) | 1.56 (39,6) | 0.63 (15,9) | 0.56 (14,3) | 1.00 (25,4) | 0.81 (0,37) | 86242 |
| 1-1/4 x 1 x 3/4 32 x 25 x 20 | 1.44 (36,6) | 1.38 (35,1) | 1.62 (41,2) | 0.75 (19,0) | 0.69 (17,5) | 1.06 (27,0) | 0.90 (0,41) | 86243 |
| 1-1/4 x 1 x 1 32 x 25 x 25 | 1.56 (39,6) | 1.50 (38,1) | 1.69 (42,9) | 0.88 (22,4) | 0.81 (20,6) | 1.00 (25,4) | 1.03 (0,47) | 86244 |
| 1-1/4 x 1 x 1-1/4 32 x 25 x 32 | 1.75 (44,4) | 1.69 (42,9) | 1.75 (44,4) | 1.06 (27,0) | 1.00 (25,4) | 1.06 (27,0) | 1.10 (0,50) | 86245 |
| 1-1/4 x 1 x 1-1/2 32 x 25 x 40 | 1.88 (47,6) | 1.81 (46,0) | 1.81 (46,0) | 1.19 (30,1) | 1.13 (28,6) | 1.06 (27,0) | 1.43 (0,65) | 86246 |
| 1-1/4 x 1-1/4 x 1/2 32 x 32 x 15 | 1.38 (35,1) | 1.38 (35,1) | 1.56 (39,6) | 0.69 (17,5) | 0.69 (17,5) | 1.00 (25,4) | 0.87 (0,39) | 86247 |
| 1-1/4 x 1-1/4 x 3/4 32 x 32 x 20 | 1.44 (36,6) | 1.44 (36,6) | 1.63 (41,4) | 0.75 (19,0) | 0.75 (19,0) | 1.06 (27,0) | 0.96 (0,43) | 86248 |
| 1-1/4 x 1-1/4 x 1 32 x 32 x 25 | 1.56 (39,6) | 1.56 (39,6) | 1.69 (42,9) | 0.88 (22,4) | 0.88 (22,4) | 1.00 (25,4) | 1.10 (0,50) | 86249 |
| 1-1/4 x 1-1/4 x 1-1/2 32 x 32 x 40 | 1.88 (47,6) | 1.88 (47,6) | 1.81 (46,0) | 1.81 (46,0) | 1.81 (46,0) | 1.06 (27,0) | 1.50 (0,68) | 86250 |
| 1-1/4 x 1-1/4 x 2 32 x 32 x 50 | 2.13 (54,1) | 2.13 (54,1) | 2.00 (50,8) | 1.44 (36,6) | 1.44 (36,6) | 1.13 (28,6) | 2.00 (0,91) | 86251 |
| 1-1/2 x 1 x 1/2 40 x 25 x 15 | 1.44 (36,6) | 1.31 (33,3) | 1.69 (42,9) | 0.69 (17,5) | 0.63 (15,9) | 1.13 (28,6) | 0.97 (0,44) | 86252 |
| 1-1/2 x 1 x 3/4 40 x 25 x 20 | 1.50 (38,1) | 1.38 (35,1) | 1.75 (44,4) | 0.75 (19,0) | 0.69 (17,5) | 1.19 (30,2) | 1.14 (0,52) | 86253 |
| 1-1/2 x 1 x 1 40 x 25 x 25 | 1.63 (41,4) | 1.50 (38,1) | 1.81 (46,0) | 0.88 (22,4) | 0.81 (20,6) | 1.13 (28,7) | 1.14 (0,52) | 86254 |
| 1-1/2 x 1 x 1-1/2 40 x 25 x 40 | 1.94 (49,3) | 1.81 (46,0) | 1.94 (49,2) | 1.19 (30,2) | 1.13 (28,6) | 1.19 (30,2) | 1.52 (0,69) | 86256 |

TABLE E (1 OF 2)
FIGURE 815
NOMINAL DIMENSIONS

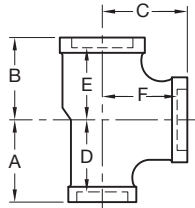


FIGURE 815
REDUCING TEE

| Nominal Pipe Size | Figure 815 | | | | | | | Approx. Weight Lbs. (kg) | Part Number |
|---------------------------------------|----------------|----------------|----------------|----------------|----------------|----------------|----------------|--------------------------|-------------|
| | ANSI Inches DN | A Inches (mm) | B Inches (mm) | C Inches (mm) | D Inches (mm) | E Inches (mm) | F Inches (mm) | | |
| 1-1/2 x 1-1/4 x 1/2 40 x 32 x 15 | 1.44 (36,6) | 1.31 (33,3) | 1.69 (42,9) | 0.69 (17,5) | 0.63 (16,0) | 1.13 (28,7) | 1.03 (0,47) | 86257 | |
| 1-1/2 x 1-1/4 x 3/4 40 x 32 x 20 | 1.50 (38,1) | 1.44 (36,6) | 1.75 (44,5) | 0.75 (19,0) | 0.75 (19,0) | 1.19 (30,1) | 1.10 (0,50) | 86258 | |
| 1-1/2 x 1-1/4 x 1 40 x 32 x 25 | 1.63 (41,4) | 1.56 (39,7) | 1.81 (46,0) | 0.88 (22,4) | 0.88 (22,4) | 1.13 (28,7) | 1.31 (0,59) | 86259 | |
| 1-1/2 x 1-1/4 x 2 40 x 32 x 50 | 2.19 (55,6) | 2.13 (54,1) | 2.00 (50,8) | 1.44 (36,6) | 1.44 (36,6) | 1.25 (57,1) | 1.94 (0,88) | 86260 | |
| 1-1/2 x 1-1/2 x 1/2 40 x 40 x 15 | 1.44 (36,6) | 1.44 (36,6) | 1.69 (42,9) | 0.69 (17,5) | 0.69 (17,5) | 1.13 (28,7) | 1.14 (0,52) | 86261 | |
| 1-1/2 x 1-1/2 x 3/4 40 x 40 x 20 | 1.50 (38,1) | 1.50 (38,1) | 1.75 (44,4) | 0.75 (19,0) | 0.75 (19,0) | 1.19 (30,1) | 1.23 (0,56) | 86262 | |
| 1-1/2 x 1-1/2 x 1 40 x 40 x 25 | 1.63 (41,2) | 1.63 (41,2) | 1.81 (46,0) | 0.88 (22,4) | 0.88 (22,4) | 1.13 (28,7) | 1.38 (0,62) | 86263 | |
| 1-1/2 x 1-1/2 x 1-1/4 40 x 40 x 32 | 1.81 (46,0) | 1.81 (46,0) | 1.88 (47,6) | 1.06 (27,0) | 1.06 (27,0) | 1.19 (30,1) | 1.50 (0,68) | 86264 | |
| 1-1/2 x 1-1/2 x 2 40 x 40 x 50 | 2.19 (55,5) | 2.19 (55,5) | 2.00 (50,8) | 1.44 (36,6) | 1.44 (36,6) | 1.25 (31,7) | 2.00 (0,91) | 86265 | |
| 2 x 1 x 2 50 x 25 x 50 | 2.25 (57,2) | 2.00 (50,8) | 2.25 (57,2) | 1.50 (38,1) | 1.31 (33,3) | 1.50 (38,1) | 2.18 (0,99) | 86266 | |
| 2 x 1-1/4 x 2 50 x 32 x 50 | 2.25 (57,2) | 2.13 (54,1) | 2.25 (57,2) | 1.50 (38,1) | 1.44 (36,6) | 1.50 (38,1) | 2.31 (1,05) | 86267 | |
| 2 x 1-1/2 x 1/2 50 x 40 x 15 | 1.50 (38,1) | 1.44 (36,6) | 1.88 (47,8) | 0.75 (19,0) | 0.69 (17,5) | 1.31 (33,3) | 1.50 (0,68) | 86268 | |
| 2 x 1-1/2 x 3/4 50 x 40 x 20 | 1.63 (41,4) | 1.50 (38,1) | 1.94 (49,3) | 0.88 (22,4) | 0.75 (19,0) | 1.38 (35,0) | 1.61 (0,73) | 86269 | |
| 2 x 1-1/2 x 1 50 x 40 x 25 | 1.75 (44,5) | 1.63 (41,4) | 2.00 (50,8) | 1.00 (25,4) | 0.88 (22,4) | 1.31 (33,3) | 1.65 (0,75) | 86270 | |
| 2 x 1-1/2 x 1-1/2 50 x 40 x 40 | 2.06 (52,4) | 1.94 (49,2) | 2.19 (55,5) | 1.31 (33,3) | 1.19 (30,2) | 1.44 (36,6) | 2.03 (0,92) | 86272 | |
| 2 x 1-1/2 x 2 50 x 40 x 50 | 2.25 (57,1) | 2.19 (55,5) | 2.50 (63,5) | 1.50 (38,1) | 1.44 (36,6) | 1.50 (38,1) | 2.37 (1,07) | 86273 | |
| 2 x 2 x 1/2 50 x 50 x 15 | 1.50 (38,1) | 1.50 (38,1) | 1.88 (47,8) | 0.75 (19,0) | 0.75 (19,0) | 1.31 (33,3) | 1.50 (0,68) | 86222 | |
| 2 x 2 x 3/4 50 x 50 x 20 | 1.63 (41,4) | 1.63 (41,4) | 1.94 (49,3) | 0.88 (22,4) | 0.88 (22,4) | 1.38 (35,0) | 1.67 (0,76) | 86223 | |
| 2 x 2 x 1 50 x 50 x 25 | 1.75 (44,5) | 1.75 (44,5) | 2.00 (50,8) | 1.00 (25,4) | 1.00 (25,4) | 1.31 (33,3) | 1.91 (0,86) | 86224 | |
| 2 x 2 x 1-1/4 50 x 50 x 32 | 1.88 (47,8) | 1.88 (47,8) | 2.13 (54,1) | 1.13 (28,7) | 1.13 (28,7) | 1.44 (36,6) | 2.05 (0,93) | 86225 | |
| 2 x 2 x 1-1/2 50 x 50 x 40 | 2.00 (50,8) | 2.00 (50,8) | 2.19 (55,6) | 1.25 (31,8) | 1.25 (31,8) | 1.50 (38,1) | 2.11 (0,96) | 86226 | |
| 2 x 2 x 2-1/2 50 x 50 x 65 | 2.63 (66,8) | 2.63 (66,8) | 2.38 (60,5) | 1.75 (44,5) | 1.88 (47,8) | 1.44 (36,6) | 3.67 (1,66) | 86227 | |
| 2-1/2 x 2 x 3/4 65 x 50 x 20 | 1.75 (44,5) | 1.63 (41,4) | 2.31 (58,7) | 0.63 (15,9) | 0.88 (22,4) | 1.75 (44,5) | 2.22 (1,01) | 86274 | |

TABLE E (2 OF 2)
FIGURE 815
NOMINAL DIMENSIONS

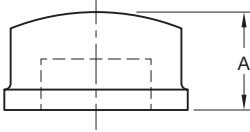


FIGURE 820
CAP

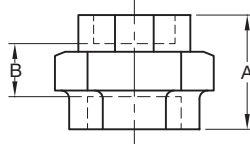


FIGURE 830
BRASS SEAT UNION

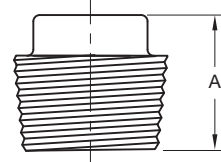


FIGURE 719
PLUG

| Nominal Pipe Size | Figure 820 | | | Figure 830 | | | | Figure 719 | | |
|-------------------|----------------|----------------|--------------------------|----------------|----------------|----------------|--------------------------|----------------|----------------|--------------------------|
| | ANSI Inches DN | A Inches (mm) | Approx. Weight Lbs. (kg) | Part Number | A Inches (mm) | B Inches (mm) | Approx. Weight Lbs. (kg) | Part Number | A Inches (mm) | Approx. Weight Lbs. (kg) |
| 1/2 15 | 0.88 (22,4) | 0.15 (0,06) | 72776 | 1.88 (47,8) | 0.81 (20,6) | 0.47 (0,21) | 86207 | 0.94 (23,9) | 0.10 (0,04) | 86292 |
| 3/4 20 | 1.00 (25,4) | 0.22 (0,10) | 72777 | 2.00 (50,8) | 0.94 (23,9) | 0.66 (0,30) | 86275 | 1.13 (28,7) | 0.18 (0,08) | 86293 |
| 1 25 | 1.18 (30,0) | 0.33 (0,15) | 72824 | 2.19 (55,6) | 0.81 (20,6) | 1.08 (0,49) | 86276 | 1.25 (31,7) | 0.28 (0,13) | 86294 |
| 1-1/4 32 | 1.31 (33,3) | 0.54 (0,24) | 72756 | 2.50 (63,5) | 1.06 (26,9) | 1.54 (0,70) | 86277 | 1.38 (35,1) | 0.50 (0,23) | 86295 |
| 1-1/2 40 | 1.38 (35,1) | 0.68 (0,31) | 72822 | 2.63 (66,8) | 1.19 (30,2) | 2.03 (0,92) | 86278 | 1.44 (36,6) | 0.70 (0,32) | 86296 |
| 2 50 | 1.50 (38,1) | 0.96 (0,43) | 72823 | 3.13 (79,5) | 1.63 (41,4) | 3.15 (1,43) | 86279 | 1.50 (38,1) | 0.90 (0,41) | 86297 |
| 2-1/2 65 | 1.75 (44,5) | 1.80 (0,82) | 72825 | — | — | — | — | — | — | — |

TABLE F
FIGURES 820, 830 & 719
NOMINAL DIMENSIONS

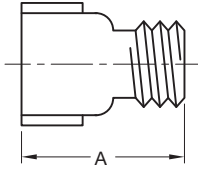


FIGURE 825
EXTENSION PIECE

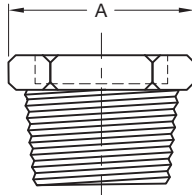


FIGURE 827
HEX BUSHING

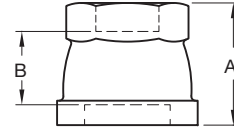


FIGURE 816
REDUCING COUPLING

| Nominal Pipe Size | Figure 825 Extension Piece | | | Figure 827 Hex Bushing | | | Figure 816 Reducing Coupling | | | | |
|--------------------------|----------------------------|----------------|--------------------------|------------------------|----------------|--------------------------|------------------------------|----------------|----------------|--------------------------|-------------|
| | ANSI Inches DN | A Inches (mm) | Approx. Weight Lbs. (kg) | Part Number | A Inches (mm) | Approx. Weight Lbs. (kg) | Part Number | A Inches (mm) | B Inches (mm) | Approx. Weight Lbs. (kg) | Part Number |
| 1/2 x 1/2 15 x 15 | 1.50 (38,1) | 0.20 (0,09) | 72751 | — | — | — | — | — | — | — | — |
| 1/2 x 1/2 15 x 15 | 2.00 (50,8) | 0.27 (0,12) | 72980 | — | — | — | — | — | — | — | — |
| 3/4 x 3/4 20 x 20 | 1.50 (38,1) | 0.22 (0,10) | 72981 | — | — | — | — | — | — | — | — |
| 3/4 x 3/4 20 x 20 | 2.00 (50,8) | 0.31 (0,14) | 73982 | — | — | — | — | — | — | — | — |
| 3/4 x 1/2 20 x 15 | — | — | — | — | — | — | 1.75 (43,2) | 0.69 (17,5) | 0.38 (0,17) | 86772 | |
| 1 x 1/2 25 x 15 | — | — | — | 1.06 (26,9) | 0.22 (0,10) | 72726 | 1.69 (42,9) | 0.50 (12,7) | 0.38 (0,17) | 86228 | |
| 1 x 3/4 25 x 20 | — | — | — | 1.06 (26,9) | 0.18 (0,08) | 72762 | 1.75 (43,2) | 0.50 (12,7) | 0.53 (0,24) | 86229 | |
| 1-1/4 x 1 32 x 25 | — | — | — | 1.19 (30,2) | 0.31 (0,14) | 72763 | — | — | — | — | |
| 1-1/2 x 1 40 x 25 | — | — | — | 1.25 (31,7) | 0.53 (0,24) | 72757 | — | — | — | — | |
| 1-1/2 x 1-1/4 40 x 32 | — | — | — | 1.25 (31,7) | 0.35 (0,10) | 72764 | — | — | — | — | |
| 2 x 1 50 x 25 | — | — | — | 1.38 (35,1) | 0.75 (0,34) | 72759 | — | — | — | — | |
| 2 x 1-1/4 50 x 32 | — | — | — | 1.38 (35,1) | 0.69 (0,31) | 72761 | — | — | — | — | |
| 2 x 1-1/2 50 x 40 | — | — | — | 1.38 (35,1) | 0.62 (0,28) | 72775 | — | — | — | — | |

TABLE G
FIGURE 825, 827 & 816
NOMINAL DIMENSIONS

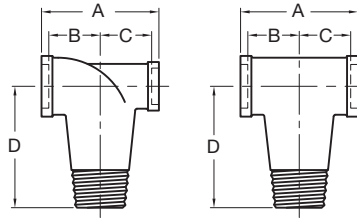


FIGURE 832
CALIFORNIA TEES

| Nominal Pipe Size | Figure 832 | | | | | Part Number |
|-----------------------------|----------------|----------------|----------------|----------------|--------------------------|-------------|
| ANSI Inches DN | A Inches (mm) | B Inches (mm) | C Inches (mm) | D Inches (mm) | Approx. Weight Lbs. (kg) | |
| 1 x 1/2 x 1 25 x 15 x 25 | 1.50 (38,1) | 0.88 (22,4) | 0.75 (19,1) | 3.00 (76,2) | 0.95 (0,43) | 42000 |
| 1 x 1 x 1 25 x 25 x 25 | 1.50 (38,1) | 0.75 (19,1) | 0.75 (19,1) | 3.00 (76,2) | 0.95 (0,43) | 42001 |

TABLE H
FIGURE 832
NOMINAL DIMENSIONS

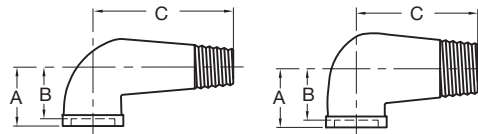


FIGURE 831
STREET ELBOWS

| Nominal Pipe Size | Figure 831 | | | | Part Number |
|--------------------|----------------|----------------|----------------|--------------------------|-------------|
| ANSI Inches DN | A Inches (mm) | B Inches (mm) | C Inches (mm) | Approx. Weight Lbs. (kg) | |
| 1 x 1/2 25 x 15 | 1.50 (38,1) | 0.75 (19,1) | 3.00 (76,2) | 0.70 (0,32) | 42003 |
| 1 x 1 25 x 25 | 1.50 (38,1) | 0.75 (19,1) | 3.00 (76,2) | 0.90 (0,40) | 42002 |

TABLE J
FIGURE 831
NOMINAL DIMENSIONS